

State of Wyoming Corner Record

(In compliance with the *CORNER PERPETUATION AND FILING ACT*, Wyoming Statutes, 1997, Section 33-29-140 et. seq., and the Rules and Regulations of the Board of Registration for Professional Engineers and Professional Land Surveyors)

Reverse side of this form may be used if more space is needed.

Record of original survey and citation of source of historical information (if corner is lost or obliterated). Description of corner monumentation evidence found and/or monument and accessories established to perpetuate the location of this corner. Sketch of relative location of monument, accessories, and reference points with course and distance to adjacent corner(s) (if determined in this survey). Method and rationale for reestablishment of lost or obliterated corner.

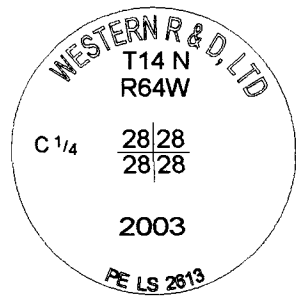
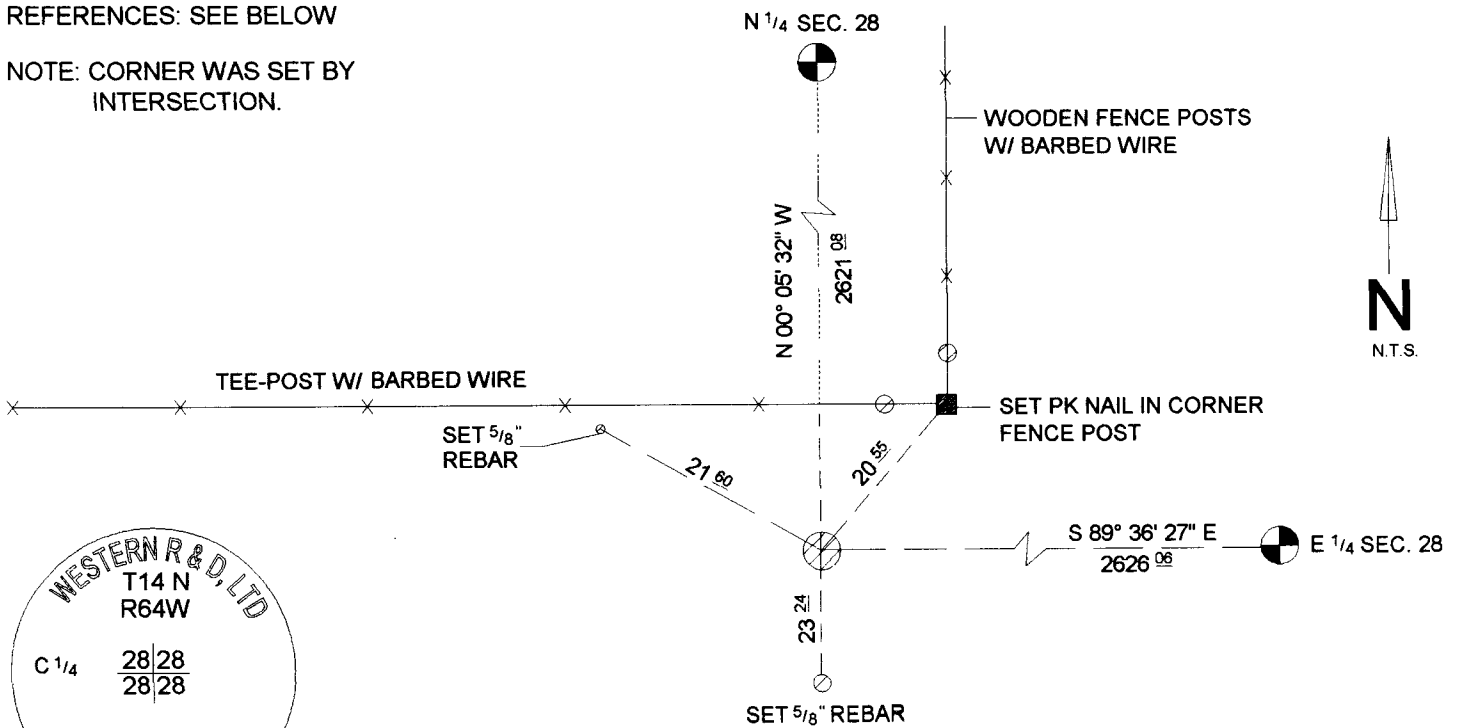
RECORD: NOTHING SET

MONUMENT FOUND: NOTHING FOUND

MONUMENT SET: SET 2 1/2" ALUMINUM
CAP ON 5/8" REBAR, 24"
LONG FLUSH W/ GROUND

REFERENCES: SEE BELOW

NOTE: CORNER WAS SET BY
INTERSECTION.



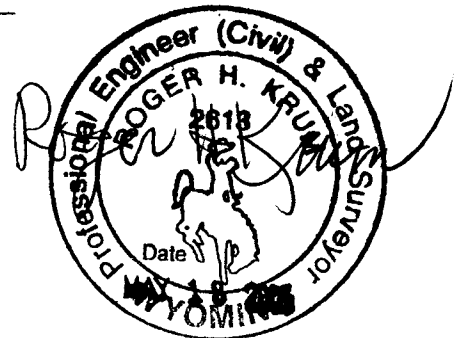
Date of Field Work: Sept 2003 Office Reference: T14NR64W-340240

CROSS INDEX DIAGRAM

	1	2	3	4	5	6	7	8	9	10	11	12	13	14	15	16	17	18	19	20	21	22	23	24	25	26		
A																												
B																												
C		6	5	4	3	2	1																					
D																												
E																												
F																												
G		7	8	9	10	11	12																					
H																												
J																												
K																												
L		18	17	16	15	14	13																					
M																												
N																												
O																												
P		19	20	21	22	23	24																					
Q																												
R																												
S																												
T		30	29	28	27	26	25																					
U																												
V																												
W																												
X		31	32	33	34	35	36																					
Y																												
Z																												

Firm/Agency, Address
 Roger H. Krum, PE & PLS2613
 Western R & D, Ltd.
 5908 Yellowstone Rd Suite B
 Cheyenne, Wyoming 82001
 Telephone Number: 307 632 5656

This corner record was prepared by me or under my direction and supervision.
 SEAL & SIGNATURE



Corner Name: Center 1/4 Section 28 Section 28 T 14 N R 64 W ; 6th P.M. Cross-Index No.: T-11